

vtech[®]

User's Manual

My 1st ToolBox



© 2016 VTech
All rights reserved
Printed in China
91-003209-001 

VTech understands that a child's needs and abilities change as they grow and with that in mind we develop our toys to teach and entertain at just the right level...

vtech *Baby*

Toys that will stimulate their interest in different textures, sounds and colours

I am...

...responding to colours, sounds and textures

...understanding cause and effect

...learning to touch, reach, grasp, sit-up, crawl and toddle

Birth-36 months



Pre-School

Interactive toys to develop their imagination and encourage language development

I want...

...to get ready for school by starting to learn the alphabet and counting

...my learning to be as fun, easy and exciting as can be

...to show my creativity with drawing and music so my whole brain develops

3-6 years



Electronic Learning Computers

Cool, aspirational and inspiring computers for curriculum related learning

I need...

...challenging activities that can keep pace with my growing mind

...intelligent technology that adapts to my level of learning

...National Curriculum based content to support what I'm learning at school

4-10 years



To learn more about this and other VTech® products, visit www.vtech.co.uk

INTRODUCTION

Thank you for purchasing the **VTech® My 1st Toolbox!**

Pretend to build or repair things with the drill, hammer and spanner while learning cool tool facts, numbers, colours, objects and more. Use the activity cards, follow the instructions and pretend to repair different objects. The handle makes it easy to take the fun on the go!



- | | |
|---------------------------|--------------------|
| ① TOOLBOX | ⑧ TOOL BUTTONS |
| ② SCREWS | ⑨ MODE SELECTOR |
| ③ CARD SLOT | ⑩ HAMMER |
| ④ TRAY HOLES | ⑪ DIRECTION SWITCH |
| ⑤ OFF/VOLUME SWITCH | ⑫ DRILL |
| ⑥ NAILS | ⑬ SPANNER |
| ⑦ ELECTRONIC PROJECT TRAY | ⑭ PROJECT CARDS |

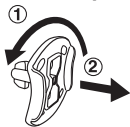
INCLUDED IN THIS PACKAGE

- One VTech® My 1st ToolBox
- Tool accessories: 1 drill, 1 hammer, 1 spanner, 2 screws, 2 nails, 2 double-sided project cards
- One electronic tray
- User's manual

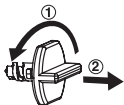
WARNING: All packing materials, such as tape, plastic sheets, packaging locks and tags are not part of this toy, and should be discarded for your child's safety.

NOTE: Please keep this user's manual as it contains important information.

Unlock the packaging locks:



1. Rotate the packaging lock 90 degrees counterclockwise.
2. Pull out the packaging lock and discard.



1. Turn the packaging lock counterclockwise several times.
2. Pull out and discard the packaging lock.

WARNING:

Do not insert anything other than the included **SCREWS** or **NAILS** into the **TRAY HOLES** of the **ELECTRONIC PROJECT TRAY**. Doing so may damage the **ELECTRONIC PROJECT TRAY**.

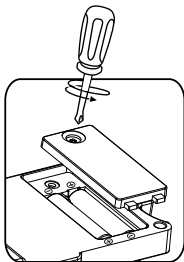


GETTING STARTED

BATTERY INSTALLATION

NOTE: For best performance, remove all factory-installed batteries from the **VTech® My 1st Toolbox** and use new alkaline batteries.

1. Make sure the unit is **OFF**.
2. Locate the battery cover on the bottom of the **ELECTRONIC TRAY** and open it with a screwdriver.
3. Install 2 new AA size batteries following the diagram inside the battery box. (New alkaline batteries are recommended for maximum performance.)
4. Replace the battery cover and tighten the screw to secure.



BATTERY NOTICE

- Use new alkaline batteries for maximum performance.
- Use only batteries of the same or equivalent type as recommended.
- Do not mix different types of batteries: alkaline, standard (carbon-zinc) or rechargeable (Ni-Cd, Ni-MH), or new and used batteries.
- Do not use damaged batteries.
- Insert batteries with the correct polarity.
- Do not short-circuit the battery terminals.
- Remove exhausted batteries from the toy.
- Remove batteries during long periods of non-use.
- Do not dispose of batteries in fire.
- Do not charge non-rechargeable batteries.
- Remove rechargeable batteries from the toy before charging (if removable).
- Rechargeable batteries are only to be charged under adult supervision.

Disposal of batteries and product



The crossed-out wheellie bin symbols on products and batteries, or on their respective packaging, indicates they must not be disposed of in domestic waste as they contain substances that can be damaging to the environment and human health.



The chemical symbols Hg, Cd or Pb, where marked, indicate that the battery contains more than the specified value of mercury (Hg), cadmium (Cd) or lead (Pb) set out in Battery Directive (2006/66/EC).

The solid bar indicates that the product was placed on the market after 13th August, 2005.



Help protect the environment by disposing of your product or batteries responsibly.

For more information, please visit:

www.recycle-more.co.uk

www.recyclenow.com

ACTIVATING NORMAL PLAY MODE

When the product is taken out of the packaging, turn it on and insert a **PROJECT CARD**. You will hear a beep and a voice confirming you are in normal play mode.

PRODUCT FEATURES

1. OFF/VOLUME SWITCH

To turn the unit **ON** or adjust the volume, slide the switch to **LOW**[🔊] / **HIGH**[🔊]. To turn the unit **OFF**, slide the switch to **OFF**[●].



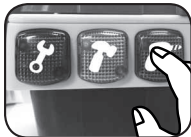
2. MODE SELECTOR

Slide the **MODE SELECTOR** to Choose [🔧] to Free Play mode, choose [?] to Quiz mode, choose [🎵] to Music mode.



3. TOOL BUTTONS

Press the **TOOL BUTTONS** to learn about the tools, their functions, hear fun sounds or answer questions.



4. TRAY HOLES

Drill the **SCREWS** or hammer the **NAILS** into the **TRAY HOLES** to play or answer questions.



5. DOUBLE-SIDED PROJECT CARDS

Insert either card into the slot to play an activity.



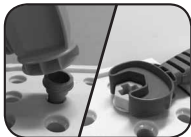
6. DRILL

Use the **DRILL** to drill screws into the **TRAY HOLES**. The **DRILL** can turn clockwise or counterclockwise by sliding the **DIRECTION SWITCH** on the side.



7. ACCESSORIES

Use the **HAMMER** or **SPANNER** to insert the **NAILS** or **SCREWS** into the **TRAY HOLES**.



8. AUTOMATIC SHUT-OFF

To prolong battery life, the **VTech® My 1st ToolBox** will shut off automatically after several minutes of no input. The unit can be turned on again by sliding the **OFF/VOLUME SWITCH** or sliding the **MODE SELECTOR**.

The unit will also automatically turn off when the batteries are very low.

ACTIVITIES

1. FREE PLAY MODE

Press the three **TOOL BUTTONS** to learn about tools, sounds and colours. Use the **DRILL**, **HAMMER** or **SPANNER** to drill **SCREWS** or hammer **NAILS** into the **TRAY HOLES**. If no **PROJECT CARD** is inserted, you will hear sounds and phrases. If a **PROJECT CARD** is inserted into the **CARD SLOT**, drill the **SCREWS** or **HAMMER** the **NAILS** into the **TRAY HOLES** to learn about numbers, more than or less than, colours, spelling, vehicles, objects and more.

After every five actions (drill a screw, hammer a nail, etc.), a reward song plays.

2. QUIZ MODE

It's time to show off your fix-it skills! Listen to the questions and answer them by using the tools or pressing the **TOOL BUTTONS**.

3. MUSIC MODE

Press the **TOOL BUTTONS** or insert a **PROJECT CARD** to hear songs about tools, numbers, colours and objects.

SUNG SONG LYRICS

Colours Card:

Let's shout out colours, to the beat.
Red, yellow, white, pink and green,
I'm a super-duper fix-it machine.
Construction orange, purple, brown and blue,
Amazing colour rhymes from me to you!

Numbers Card:

One, two, grab a screw.
Three, four, drill some more.
Five, six, it's all fixed!
Seven, eight, nine, feeling fine!

Vehicles Card:

Things that go fast and slow,
Need lots of care.
A patch here, a mend there,
All the fixing, we can share!

Housewares Card:

Oh I love to fix everything!
I'm never without my toolbox.
No project is too big or too small,
Oh I love to fix everything.

Spanner Song:

Righty tighty, lefty loosey,
I love my trusty spanner
Righty tighty, lefty loosey,
It lives inside my toolbox!

Hammer Song:

I need a nail and a hammer.
I need a hammer and a nail.
I have my tools and I'm on the fix-it trail!

Drill Song:

We have a drill and a screw,
Whaddya want to do?
Let's build something for
Me and you!

Melodies

1. One, Two Buckle My Shoe
2. I've Been Working on the Railroad
3. Bingo
4. Old MacDonald Had a Farm
5. Mulberry Bush
6. Jack Be Nimble
7. Take Me Out to the Ballgame
8. Humpty Dumpty
9. Little Boy Blue

CARE & MAINTENANCE

1. Keep the unit clean by wiping it with a slightly damp cloth.
2. Keep the unit out of direct sunlight and away from any direct heat source.
3. Remove the batteries when the unit is not in use for an extended period of time.
4. Do not drop the unit on hard surfaces and do not expose the unit to moisture or water.

TROUBLESHOOTING

If for some reason the program/activity stops working or malfunctions, please follow these steps:

1. Please turn the unit **OFF**.
2. Interrupt the power supply by removing the batteries.
3. Let the unit stand for a few minutes, then replace the batteries.
4. Turn the unit **ON**. The unit should now be ready to play again.
5. If the product still does not work, replace with a new set of batteries.

If the problem persists, please call our Consumer Services Department on 01235 546810 (from UK) or +44 1235 546810 (outside UK) and a service representative will be happy to help you.

IMPORTANT NOTE:

Creating and developing **VTech®** products is accompanied by a responsibility that we at **VTech®** take very seriously. We make every effort to ensure the accuracy of the information, which forms the value of our products. However, errors sometimes can occur. It is important for you to know that we stand behind our products and encourage you to call our Consumer Services Department on 01235 546810 (from UK) or +44 1235 546810 (outside UK), A service representative will be happy to help you.





vtech®

PRODUCT WARRANTY



Thank you for choosing this quality product from VTech. We hope it will bring many hours of entertainment, imaginative play and learning.

1. The product detailed above is covered by a one year warranty from the date of purchase, against any defects in materials or workmanship.
2. The product may be returned to the place of purchase. Alternatively the product can be returned to VTech Electronics Europe plc (see address below), with proof of purchase, without proof of purchase no replacement will be provided.
3. VTech Electronics Europe plc will examine the product and if it is found to be defective due to faulty materials or workmanship, will replace the product at their discretion.
4. If the product covered by this warranty is damaged due to misuse, modification or unauthorised repair, or because of faulty batteries, battery discharge or incorrect electrical connections, then this warranty becomes void.
5. This warranty is personal to the original purchaser and is not transferable.
6. Breakages to the LCD screen are not covered by the warranty.
7. Returns to VTech Electronics Europe plc should include a cheque or postal order for £1.50 towards the cost of return postage and packaging.
8. Products returned to VTech Electronics Europe plc, should be addressed as follows and packed carefully to avoid damage in transit (Please do not include batteries or adaptor).
Please include details of the fault together with your name and address.
9. To keep an online record of your warranty, please register your product online at www.vtech.co.uk/warranty

VTech Electronics Europe plc, c/o Tablogix Limited, 200 Milton Park, Abingdon, Oxon OX14 4TA

THIS WARRANTY IS OFFERED AS AN EXTRA BENEFIT AND DOES NOT AFFECT CONSUMERS' STATUTORY RIGHTS.

This warranty is valid for the UK and Eire only. For products purchased outside the UK and Eire, please contact your local distributor or place of purchase.

